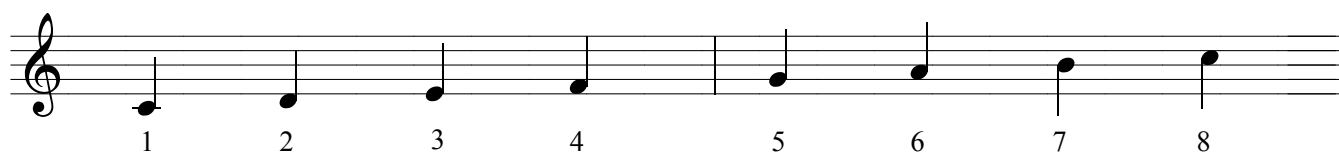


SYNONYMOUS?

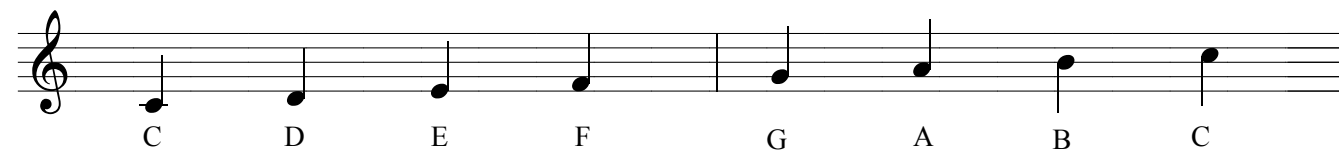
These are the names given the notes of a scale as used in a system known as solfege. This system requires that its user retain a sense of relationship and of interval in the mind when it is applied to sight singing.



These are the numbers assigned to scale steps or degrees. Notice that in the example above, the first scale degree and the eighth scale degree are called "do". They have a similar but not the same sound.



These are the letters given to the notes as they appear in the example. Two notes are called "C" but they are not the exact same notes.



The note names below have a number to the right of them. This number signifies that, for instance, C4 is the fourth C on a piano, going from left to right. See the illustration of the piano keyboard.

